

The better way to build™



Installation Manual NAILBASE SIPs



NAILBASE PANEL:

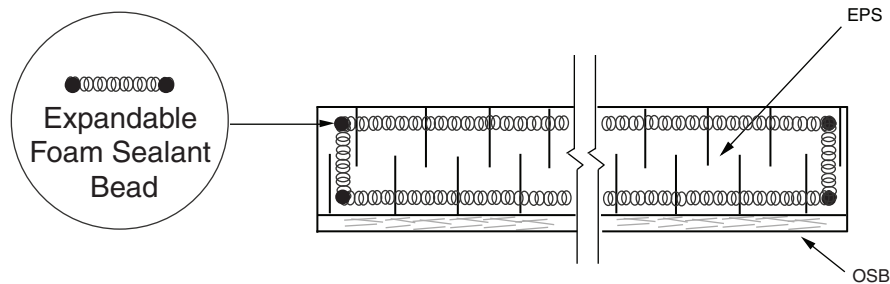
- [Air Barrier AB-3: Air Barrier Details for Nailbase Panel](#)
- [Drawing NB-1: Typical Nailbase Panel \(Roof and Walls\)](#)
- [Drawing NB-2: Nailbase Ceiling Panel](#)

AIR BARRIER

RECOMMENDED DETAILS FOR AIR BARRIER

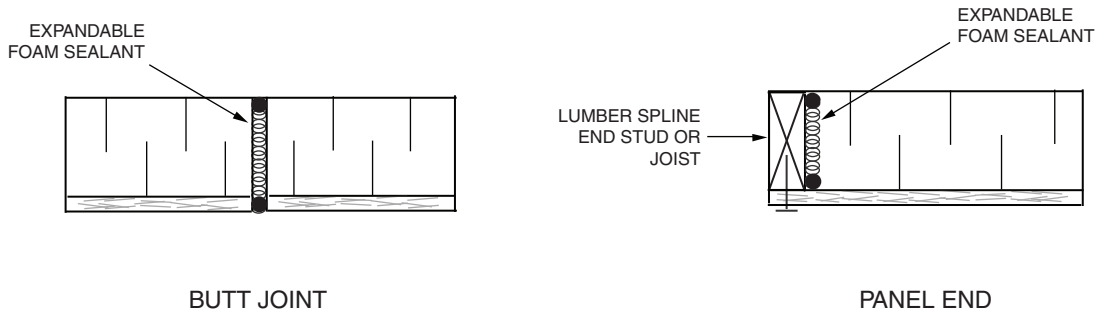
All FOAM SEALANT should be applied onto the NAILBASE PANEL in a continuous rectangular pattern along the outer most edge of the area to be sealed.

A low expansion EXPANDABLE FOAM SEALANT should conform to the AAMA 812-04 standard. Apply a 1/2 inch or a 12.5 mm diameter of a continuous bead of expandable foam sealant onto the NAILBASE PANEL:



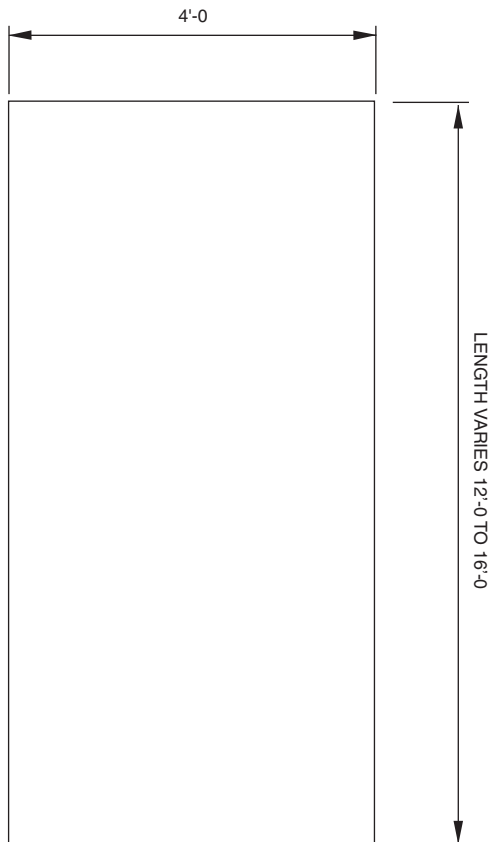
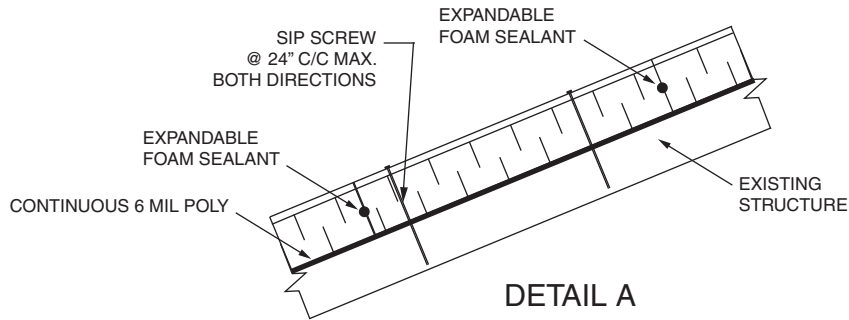
(1) Foam to Foam: Use a low expansion foam sealant.

(2) Foam to Wood: Use a low expansion foam sealant.

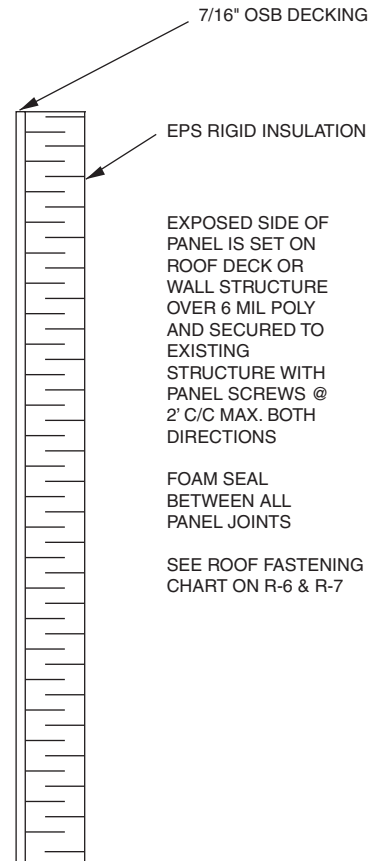


www.thermapan.com
1-877-443-WALL (9255)

TITLE		PROJECT	
AIR BARRIER DETAILS FOR NAILBASE PANEL			
REFERENCE	SCALE		
	N.T.S.		
DATE	REVISION	DWG. No.	
NOVEMBER 2010	1	AB-3	

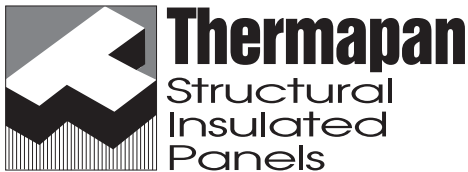


ELEVATION



SECTION

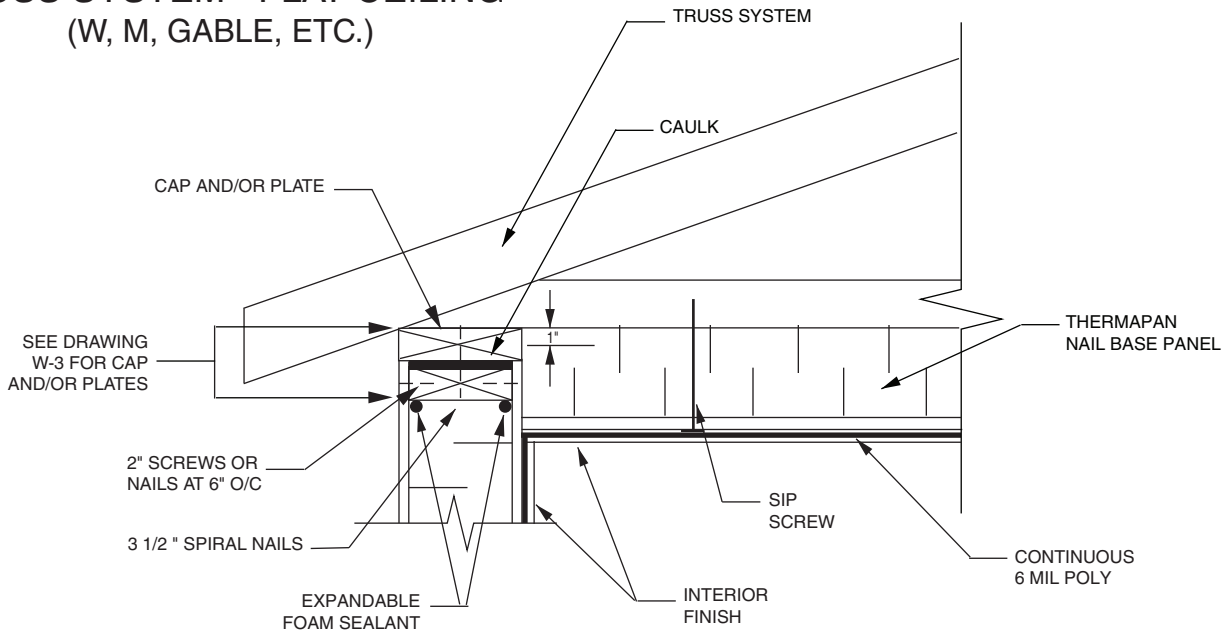
NOTES: SIP SCREWS TO BE INSTALLED EVERY 2' O/C BOTH DIRECTIONS.
REFER TO AIR BARRIER (AB-3) DETAILS FOR SEALING
NAILBASE PANEL CONNECTIONS.



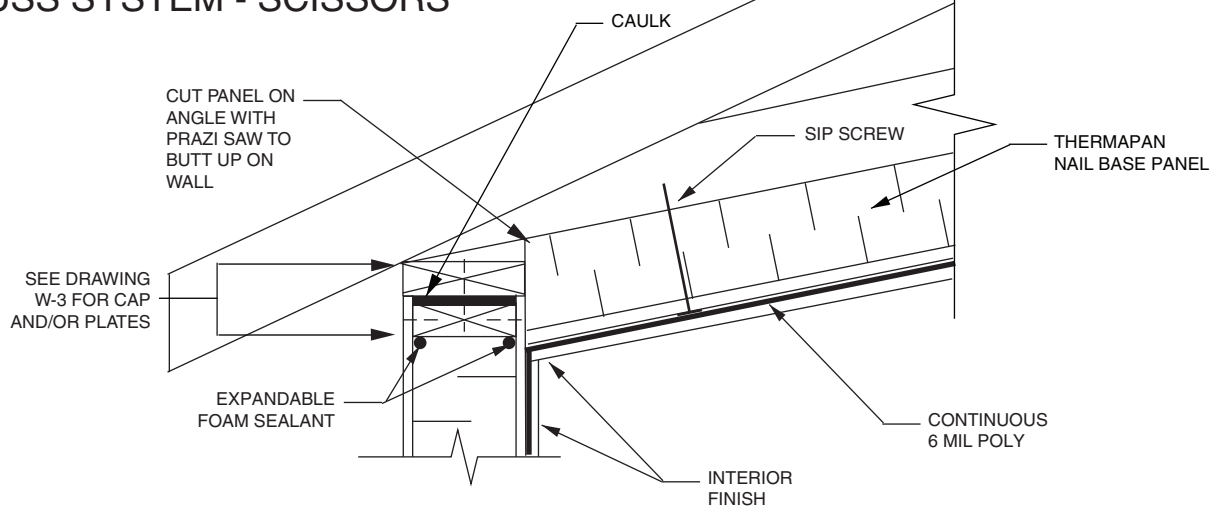
www.thermapan.com
1-877-443-WALL (9255)

TITLE		PROJECT	
TYPICAL NAILBASE PANEL (ROOF AND WALLS)			
REFERENCE	SCALE		
	N.T.S.		
DATE	REVISION	DWG. No.	
JUNE 2009	2	NB-1	

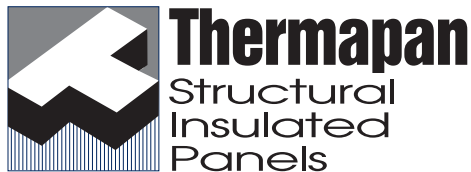
TRUSS SYSTEM - FLAT CEILING (W, M, GABLE, ETC.)



TRUSS SYSTEM - SCISSORS



NOTES: SIP SCREWS TO BE INSTALLED EVERY 2' O/C BOTH DIRECTIONS.
REFER TO AIR BARRIER (AB-3) DETAILS FOR SEALING
NAILBASE PANEL CONNECTIONS.



www.thermapan.com
1-877-443-WALL (9255)

TITLE		PROJECT	
NAILBASE CEILING PANEL			
REFERENCE	SCALE		
	N.T.S.		
DATE	REVISION	DWG. No.	
JUNE 2009	2	NB-2	